



**Elstree Road, Bushey WD23 4GQ**

**£3,400 PCM**

Welcome to this charming chalet bungalow situated in the highly sought-after area of Bushey Heath, Hertfordshire, directly opposite the prestigious Immanuel School.

As you approach the property, you are greeted by a large driveway that provides ample parking for multiple vehicles. The bungalow also features a spacious garage, perfect for secure parking or additional storage. There is also a good-sized mature rear garden, offering a tranquil outdoor space.

The ground floor boasts three versatile reception rooms, providing ample space for entertaining. The well-appointed kitchen is designed with functionality in mind, offering plenty of counter space and storage options.

The property includes four bedrooms- the master bedroom is particularly spacious, with ample natural light and plenty of wardrobe space. Two well-maintained bathrooms serve the property, one being a large en-suite to the master bedroom.

To arrange a viewing, call 020 3271 0111

## Elstree Road, Bushey WD23 4GQ

Reception

Kitchen

Bathroom

Entrance Hall

Garage

Master Bedroom

Bedroom Two

Dining Room

Bedroom Three garage (garage)

Wardrobe

En-Suite Shower Room

Bedroom Four

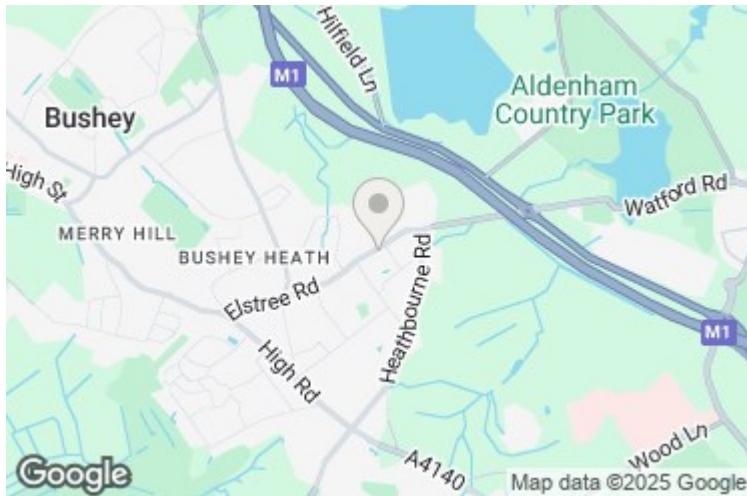
Storage

Living Room

Garden

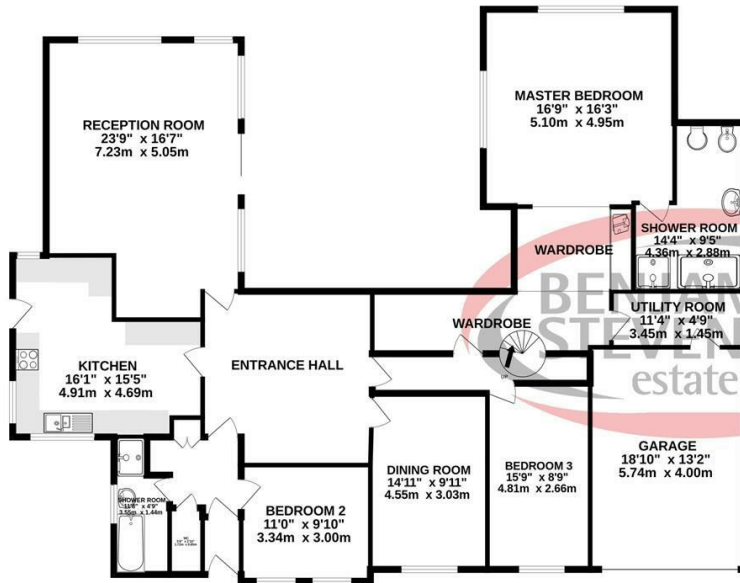
Front Elevation

Utility Room

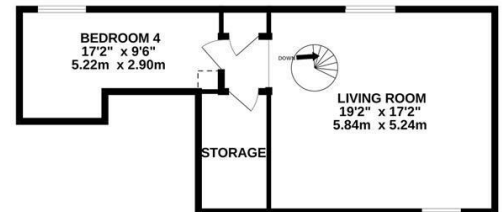




GROUND FLOOR  
2100 sq.ft. (195.1 sq.m.) approx.



1ST FLOOR  
538 sq.ft. (50.0 sq.m.) approx.



TOTAL FLOOR AREA : 2637 sq.ft. (245.0 sq.m.) approx.

Whilst every attempt has been made to ensure the accuracy of the floorplan contained here, measurements of doors, windows, rooms and any other items are approximate and no responsibility is taken for any error, omission or mis-statement. This plan is for illustrative purposes only and should be used as such by any prospective purchaser. The services, systems and appliances shown have not been tested and no guarantee as to their operability or efficiency can be given.  
Made with Metropix ©2024

